

# Learning Instrumentation And Control Engineering

We Provide Tools and Basic Information for Learning Process Instrumentation and Control Engineering.

SPONSORED SEARCHES

UY Instrumentation

AIT Instrument

ZSL Instrument

FSL Instrumentation



## Instrument Abbreviations Used in Instrumentation Diagrams (P&IDs) III

[Tweet](#)

Share 25





Google Custom Search

### MPU-9250 DataSheet PDF - InvenSen

Motion Tracking Device datasheetpdf.com

To further understand instrument abbreviations used in instrumentation and process diagrams, we have presented more examples of the common combinations of instrument abbreviations you may likely come across. They include abbreviations for switches and alarm devices, transmitters, solenoids, relays, computing devices, primary elements, test points, well or probe, viewing devices e.g glass, safety devices as well as final elements.

The main objective of bringing many possible combinations of these process instruments is to drive home the understanding of how they are formed such that once you see them being used in a process or instrumentation diagram or even conceptual or flow diagrams, you will immediately be in a position to identify them and know what they are being used for.

First Letters	Initiating, Measured, Variable	Switches & Alarm Devices*			Transmitters			Solenoids, Relays, Computing Devices	Primary Element	Test Point	Well or Probe	Viewing Device, Glass	Safety Device	Final Element
		High**	Low	Comb	Recording	Indicating	Blind							
A	Analysis	ASH	ASL	ASHL	ART	AIT	AT	AY	AE	AP	AW			AV
B	Burner/ Combustion	BSH	BSL	BSHL	BRT	BIT	BT	BY	BE		BW	BG		BZ
C	User's Choice													
D	User's Choice													
E	Voltage	ESH	ESL	ESHL	ERT	EIT	ET	EY	EE					EZ
F	Flow Rate	FSH	FSL	FSHL	FRT	FIT	FT	FY	FE	FP		FG		FV
FQ	Flow Quantity	FQSH	FQSL			FQIT	FQT	FQY	FQE					FQV
FF	Flow Ratio	FFSH	FFSL						FE					
G	User's Choice													
H	Hand			HS										HV
I	Current	ISH	ISL	ISHL	IRT	IIT	IT	IY	IE					IZ
J	Power	JSH	JSL	JSHL	JRT	JIT	JT	JY	JE					JV
K	Time	KSH	KSL	Cell	KSHL	KIT	KT	KY	KE					KV
L	Level	LSH	LSL	LSHL	LRT	LIT	LT	LY	LE		LW	LG		LV
M	User's Choice													
N	User's Choice													
O	User's Choice													

P	Pressure/ Vacuum	PSH	PSL	PSHL	PRT	PIT	PT	PY	PE	PP			PSV, PSE	PV
PD	Pressure, Differential	PDSH	PDSL		PDRT	PDIT	PDT	PDY	PE	PP				PDV
Q	Quantity	QSH	QSL	QSHL	QRT	QIT	QT		QE					QZ
R	Radiation	RSH	RSL	RSHL	RRT	RIT	RT	RY	RE		RW			RZ
S	Speed/ Frequency	SSH	SSL	SSHL	SRT	SIT	ST	SY	SE					SV
T	Temperature	TSH	TSL	TSHL	TRT	TIT	TT	TY	TE	TP	TW		TSE	TV
TD	Temperature, Differential	TDSH	TDSL		TDRT	TDIT	TDT	TDY	TE	TP	TW			TDV
U	Multivariable							UY						UV
V	Vibration/ Machinery Analysis	VSH	VSL	VSHL	VRT	VIT	VT	VY	VE					VZ
W	Weight/ Force	WSH	WSL	WSHL	WRT	WIT	WT	WY	WE					WZ
WD	Weight/ Force, Differential	WDSH	WDSL		WDRT	WDIT	WDT	WDY	WE					WDZ
X	Unclassified													
Y	Event/State/ Presence	YSH	YSL					YY	YE					YZ
Z	Position/ Dimension	ZSH	ZSL	ZSHL	ZRT	ZIT	ZT	ZY	ZE					ZV
ZD	Gauging/ Deviation	ZDSH	ZDSL		ZDRT	ZDIT	ZDT	ZDY	ZDE					ZDV

\*A, Alarm, the annunciating device, may be used in the same way as S, switch, the switching device.

\*\* The letters H and L may be omitted in the undefined case.

The table above is a guide. It does not cover all possible combinations of instrument abbreviations that one may encounter in the process industry.

Note that apart from the combinations above, there are some other possible combinations when it comes to instrument abbreviations. Some combinations which might not be common in your process plant are shown in the table below:

Instrument Abbreviation	Meaning or Designation Used to Qualify Instrument
FO	Restriction Orifice
FRK, HIK	Control Stations
FX	Accessories
TJR	Scanning Recorder
LLH	Pilot Light
PFR	Ratio
KQI	Running Time Indicator
QQI	Indicating Counter
WKIC	Rate-of-Weight-Loss Controller
HMS	Hand Momentary Switch

SPONSORED SEARCHES

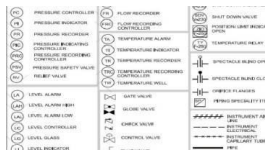


[FSL Instrumentation](#)

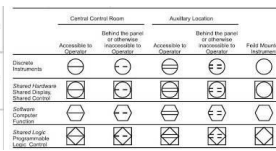
[UY Instrumentation](#)

[AIT Transmitter](#)

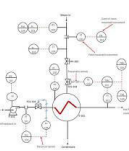
[Hik P&ID](#)



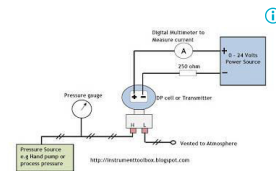
**Instrument Abbreviations Used in Instrumentation...**



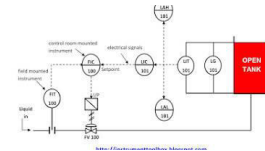
**Basics of Piping and Instrumentation Diagrams (P&IDs)**



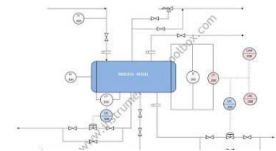
**Piping and Instrumentation Diagrams:Tutorials I**



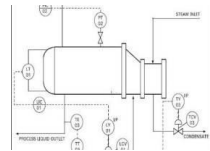
**How to Calibrate Your DP Transmitter**



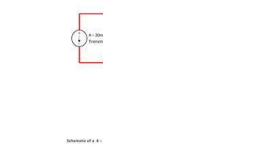
**Piping and Instrumentation Tutorials III:...**



**Piping and Instrumentation Diagrams Tutorials V**



**Understanding P&IDs Drawings**



**Basics of Current I**

**Related Posts:** Instrumentation Diagrams

[Common Terms Used to Interpret P&ID Drawings](#)

[Common Process Equipment Symbols Used in Developing Process Flow Diagrams \(PFD\) and P&IDs II](#)

[Common Process Equipment Symbols Used in Developing Process Flow Diagrams \(PFD\) and P&IDs I](#)

[Basics of Process Flow Diagrams \(PFDs\)](#)

[Piping and Instrumentation Diagrams Tutorials III: Flow and Level Control](#)

[Instrument Abbreviations Used in Instrumentation Diagrams \(P&ID\)](#)

[Piping and Instrumentation Diagrams Tutorials II: Pressure Control](#)

[Piping and Instrumentation Diagrams:Tutorials I](#)

[Common P&ID symbols used in Developing Instrumentation Diagrams](#)

[Piping and Instrumentation Diagrams : Piping Line Number Identification](#)

[Basic Functions of Instruments in a P&ID](#)

[Understanding P&IDs Drawings](#)

[How to Read and Interpret Piping and Instrumentation Diagrams \(P&ID\)](#)

[Basics of Piping and Instrumentation Diagrams \(P&IDs\)](#)

[Basics of Instrument Loop Diagrams](#)

[Instrument Abbreviations Used in Instrumentation Diagrams \(P&IDs\) III](#)

[Instrument Abbreviations Used in](#)

[Instrumentation Diagrams \(P&IDs\) II](#)

[Piping and Instrumentation Diagrams Tutorials V](#)

[Piping and Instrumentation Diagrams Tutorials IV](#)

Learning Instrumentation And Control Engineering



[Email This Blog](#)[This! Share to Twitter](#) [Share to Facebook](#)



Labels: [Instrumentation Diagrams](#)

[Newer Post](#) [Older Post](#) [Home](#)



**READ IN YOUR LANGUAGE**

Select Language

Powered by [Google Translate](#)



**USEFUL ENGINEERING LINKS**

[How to Specify Electric Motors for Hazardous Locations](#)

[Common Cause of Battery Failures](#)

[Understanding Battery Technical Specifications](#)

[Instrumentation Books for Instrument Engineers and Technicians](#)

[Flow Meter Selection Guide](#)

[How to Calibrate a Pressure Gauge](#)

[Sizing Orifice Plates with Daniel Flow Calculator](#)

[Basics of Control Valve Positioners](#)

[How to Setup a HART Transmitter](#)

[Basics of Ultrasonic Flow Meters](#)

[AGA 3 Gas Flow Equation](#)

[Learning Electrical Engineering](#)



**SUBSCRIBE AND GET INSTANT UPDATES**





CATEGORIES

- [Control Valves \( 32 \)](#) [Flow meters \( 22 \)](#)
- [Temperature sensors \( 22 \)](#) [Calibration \( 19 \)](#)
- [Instrumentation Diagrams \( 19 \)](#) [Level Measurement \( 15 \)](#) [DP Transmitters \( 14 \)](#)
- [Orifice Plates \( 11 \)](#) [Thermocouples \( 11 \)](#)
- [Transmitters \( 11 \)](#) [Pneumatic Systems \( 10 \)](#)
- [Pressure Switch \( 10 \)](#) [RTD \( 9 \)](#) [pressure sensors \( 9 \)](#) [Process Control \( 7 \)](#) [Electrical Noise \( 6 \)](#) [Electricals \( 6 \)](#) [HART Protocol \( 6 \)](#)
- [Pressure Gauges \( 6 \)](#) [4 - 20mA Signals \( 4 \)](#)
- [Basics of Instrumentation \( 4 \)](#) [Digital or Analog Multimeters \( 2 \)](#) [Fluke pressure calibrator \( 2 \)](#) [Instrument Engineers \( 2 \)](#)
- [Thermowells \( 2 \)](#) [Electric Motors \( 1 \)](#)
- [Instrument Engineers \( 1 \)](#) [Measurement terminology \( 1 \)](#) [Motor Nameplate \( 1 \)](#)



EXPLORE WWW.INSTRUMENTATIONTOOLBOX.COM

<a href="#">How a Current to Pressure Transducer Works</a>	<a href="#">How to Test 3-phase AC Motor Windings with an Ohmmeter</a>
<a href="#">Common Symbols Used in Process and Instrumentation Diagrams</a>	<a href="#">How to Read Torque Speed Characteristics of AC Motors</a>
<a href="#">How to Calibrate Your DP Transmitter</a>	<a href="#">Instrument Abbreviations Used in Instrumentation Diagrams</a>
<a href="#">How to Calibrate a Pressure Gauge</a>	<a href="#">How a Pressure Switch Works</a>
<a href="#">How to Zero a Pressure Transmitter</a>	<a href="#">How to Convert Thermocouple Millivolts to Temperature</a>
<a href="#">How to Size an Orifice Flow meter</a>	<a href="#">How Ultrasonic Flow meters Work</a>
<a href="#">Basics of DP Valve Manifolds</a>	<a href="#">How Turbine Flow meters Work</a>
<a href="#">How to Measure Electric Motor Insulation Resistance</a>	<a href="#">Principles &amp; Formulas for Flow Measurement</a>
<a href="#">Basics of AC Motor Service Factor</a>	<a href="#">How a Temperature Control Valve Works</a>
<a href="#">NEMA Three phase AC Motor Designs</a>	<a href="#">How a Valve Positioner Works</a>



© 2009 - 2018 instrumentationtoolbox.com. All Rights Reserved. Powered by Blogger.

